

Parata PharmLoc™

AT-RISK-MED SECURELY CONTROLLED

BRINGING EFFICIENCY AND ACCURACY TO THE POUCH VERIFICATION PROCESS

- Limit access to CII and At-Risk Medications and reduce your liability
- Compared to key lock cabinets, PharmLoc is always locked and no hunting for keys or waiting
- Software controlled electronic locks
- Users must be enrolled to access an At-Risk-Medication (ARM) location
- User authentication to access ARM locations by biometric fingerprint, scanning a user token that is printed when they log in, or typing user name and password
- ARM is determined by each pharmacy - can be C II s, or all controlled medications, and expensive non-controlled medications
- Utilizes Beacon® High-Density (HD) drawers - configurable for a few drawers to the entire cabinet
- Integrated into existing Beacon workflow
- Identifies ARM location with Beacon's pick-and-put-to-light technology
- Optional red light and horn alerts the pharmacy when a user leaves a drawer open
- Count verification settings are configurable - verify count, blind count, always, random, or no count for each ARM



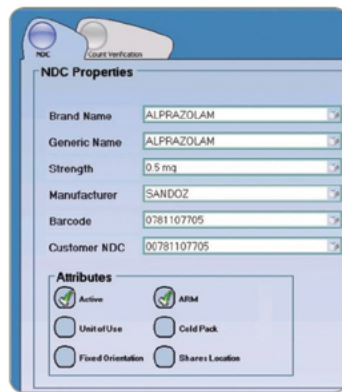
Parata PharmLoc™

AT-RISK-MED SECURELY CONTROLLED

FUNCTION	SPECIFICATIONS
Size	34.5"W × 66"H x 42.3" D
Cabinet Capacity	Up to 1,000 packages
Footprint	Less than 11 square feet
Cabinet Configurations	4 double height drawers or 16 single height drawers
Drawer Capacity	Steel mesh drawers up to 44 lbs.
Security	Biometric fingerprint, token scan, or keyboard login/password



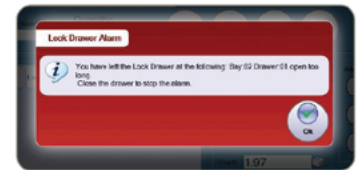
Credentials for Put and Pick



Setting MED as ARM



Setting Count Verify



Open ARM Drawer Alarm

ADDITIONAL PRODUCTS TO MAXIMIZE EFFICIENCY



3-Bay Workstation



Beacon Carousel