

# Parata InspectRx<sup>®</sup>

## ACCURATE POUCH VERIFICATION

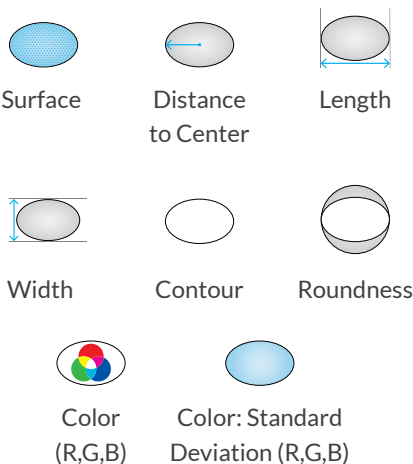
### BRINGING EFFICIENCY AND ACCURACY TO THE POUCH VERIFICATION PROCESS

- Small footprint
- 3 processing speed models  
Inspect 24 – 2,400 pouches/hr.  
Inspect 36 – 3,600 pouches/hr.  
Inspect 54 – 5,400 pouches/hr.
- Inspect 24 and 36 are upgradable to faster speeds as your volume dictates
- Multiple spectrum analysis camera
- “On the fly” reference imaging streamlines database maintenance
- Corrector station facilitates correction and documentation of pouches requiring correction
- Manager application provides easy retrieval of images and quick reporting of production statistics



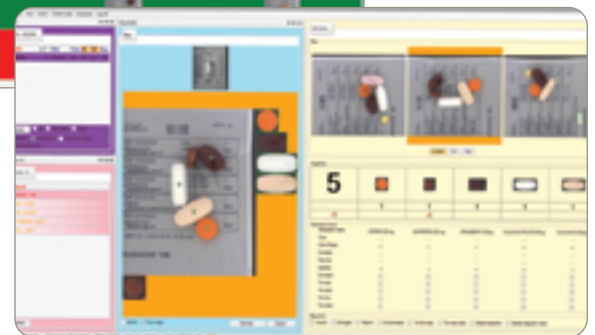
### ELECTRONIC INSPECTION

Images are analyzed using a self-maintained database to inspect 12 characteristics of meds in each pouch:



Color indicators on viewing screen provide visual sorting of pouches to enhance workflow

**Dark Green** = Correct  
**Yellow** = Suspect  
**Light Green** = Checked, Correct



**Red** = Checked, Incorrect  
**Blue** = Current Pouch Selected for Inspection

\*Color bar printing cannot be electronically validated by InspectRx<sup>®</sup>

# Parata InspectRx®

## ACCURATE POUCH VERIFICATION

FUNCTION	SPECIFICATIONS
Size	75"W × 26"D × 57"H; 112"W × 26"D × 57"H (including Collector)
Weight	374 lbs.; 814 lbs. (including Collector)
Speed	Inspect 24 – 2,400 pouches/hr. Inspect 36 – 3,600 pouches/hr. Inspect 54 – 5,400 pouches/hr.
Power Source	110V, 60Hz. 12 Amp & Ground

### ENHANCE YOUR WORKFLOW

- Collector™ unit works with InspectRx to separate pouches by patient, drug, or med cabinet.
- Cuts, rolls, and secures pouches, dropping into tote for delivery.
- Dimensions: 37"W × 26"D × 49"H
- Net Weight: 440 lbs.
- Power Source: 110V, 60Hz. 12 Amp & Ground.



### COMPLEMENT YOUR PROCESS



BullsEye®  
Tablet Splitter



Automatic Spooler  
for ATP® Series



ATP® 2